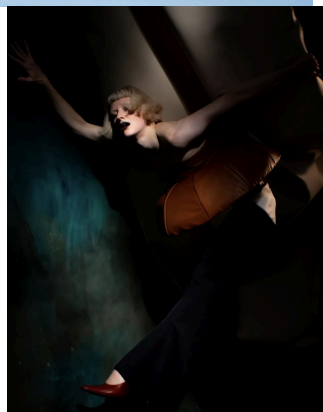


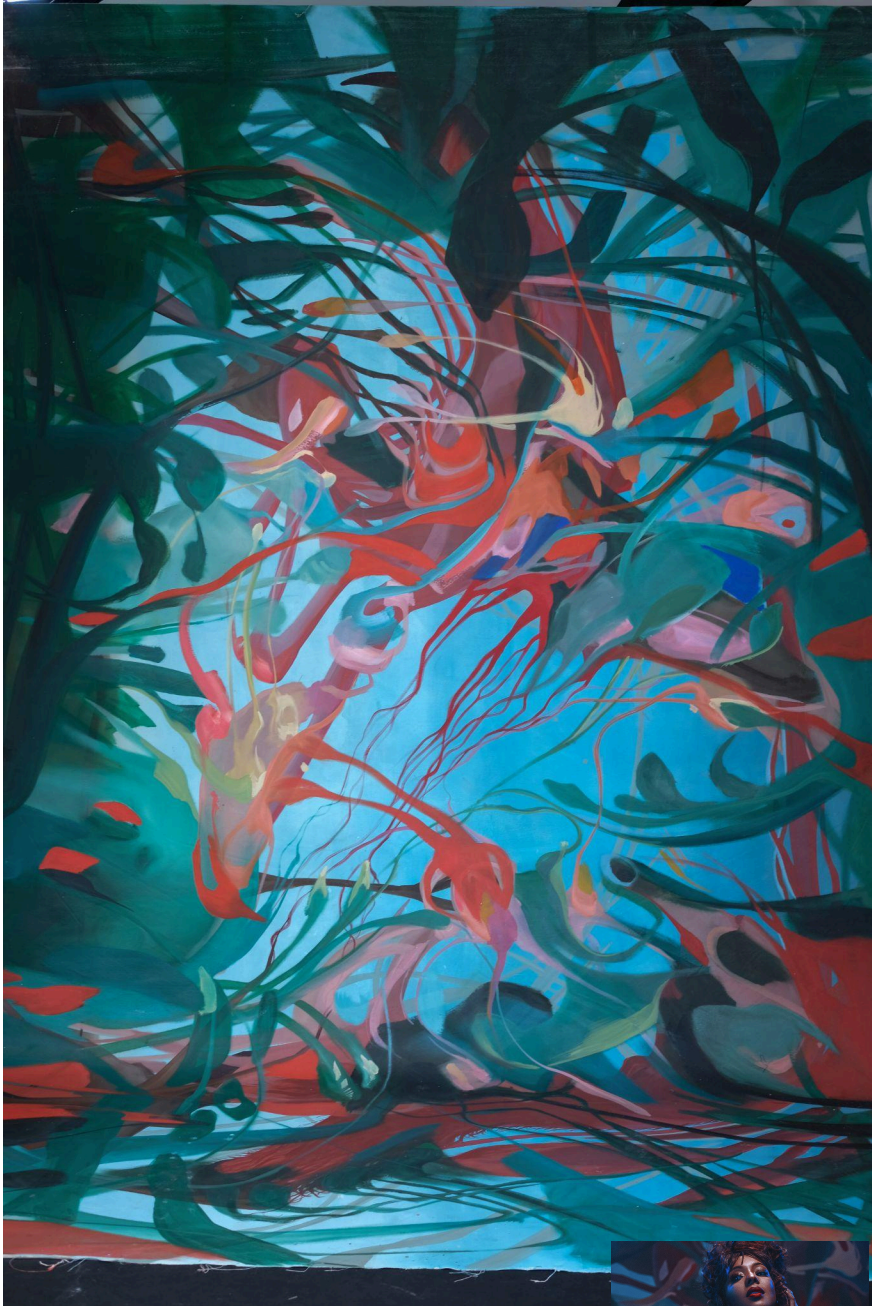
MGJLawrence oil painted backdrops & props catalogue

AVAILABLE BACKDROPS

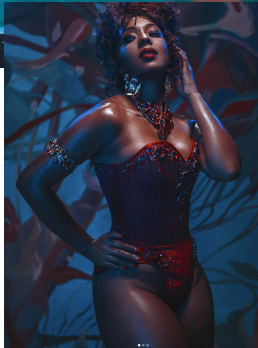


Prussian Blue Raw Umber
10x17 foot / 3x5meters
Oil on canvas
£200 per day



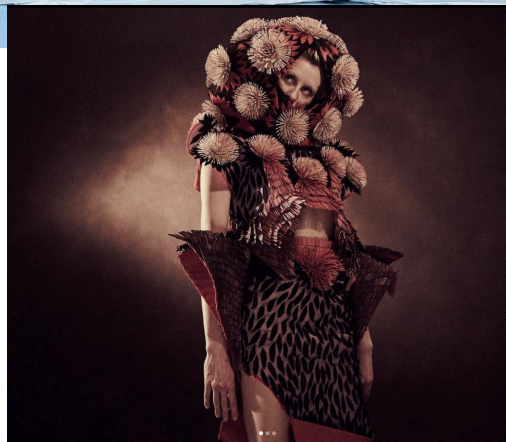


Tropical
10x17 foot / 3x5meters
Oil on canvas
£250 per day



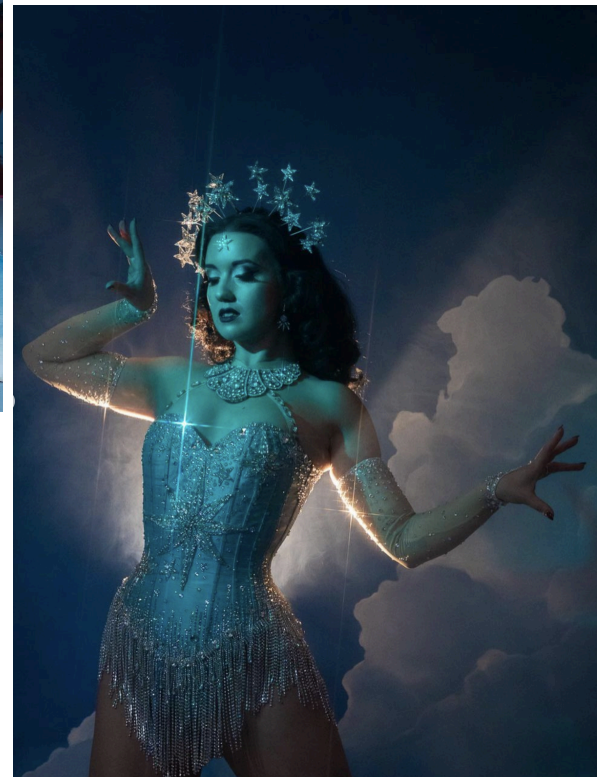


Burnt Umber
10x17 foot / 3x5meters
Oil on canvas
£200 per day



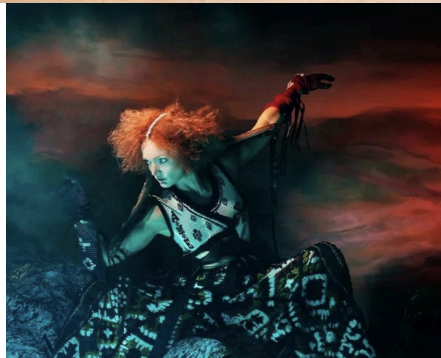


Clouds
10x17 foot / 3x5meters
Oil on canvas
£200 per day





Welsh Landscape
10x17 foot / 3x5meters
Oil on canvas
£250 per day



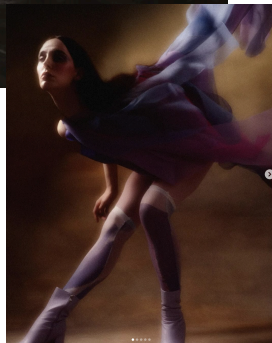
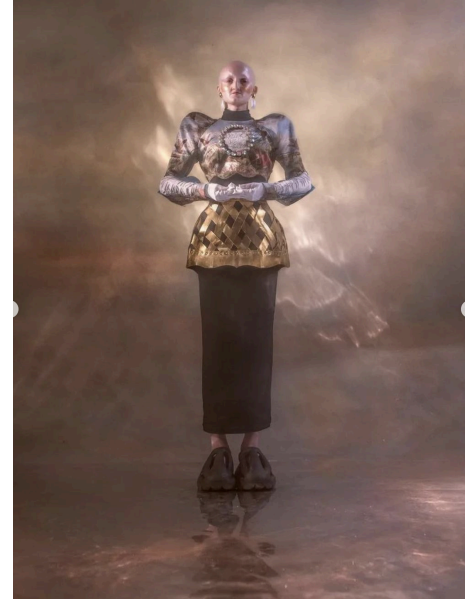


Winter Woods
10x17 foot / 3x5meters
Oil on canvas
£250 per day





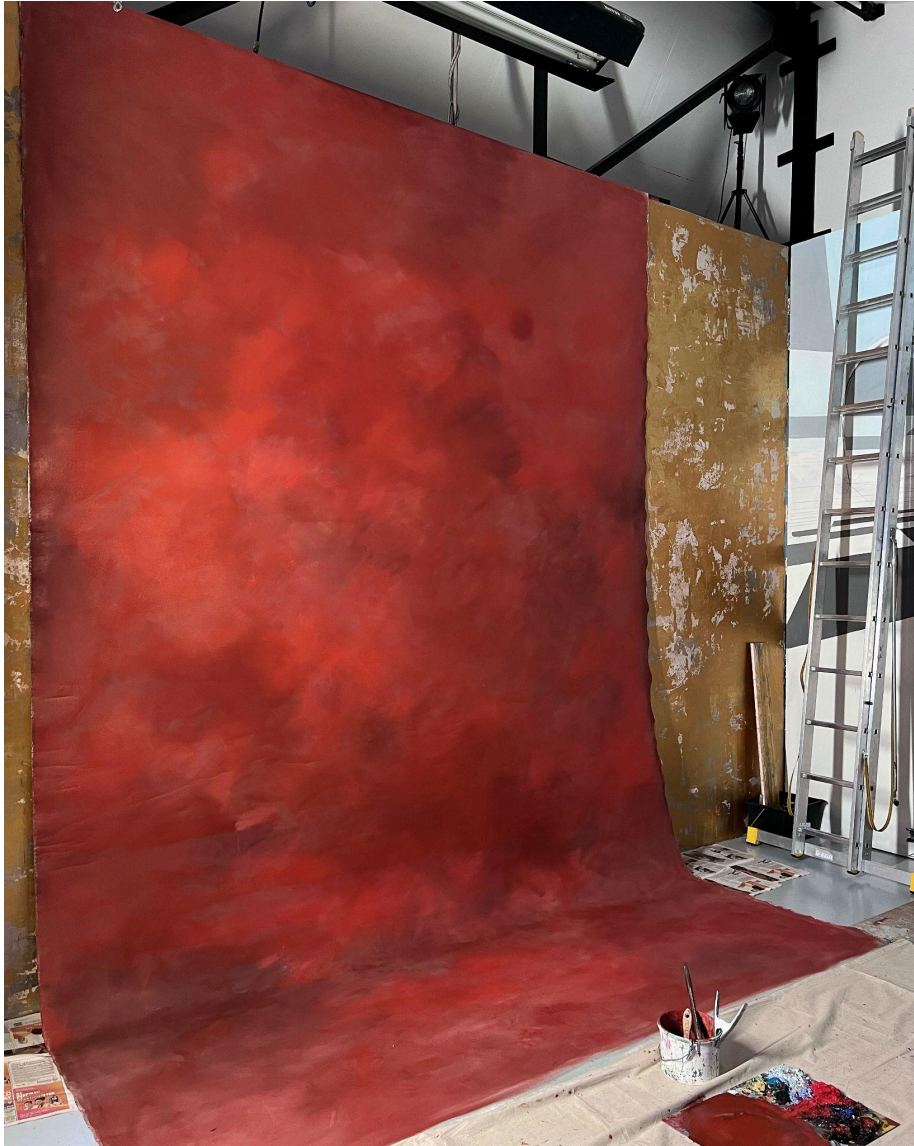
Yellow Ochre Burnt Sienna
10x17 foot / 3x5meters
Oil on canvas
£200 per day



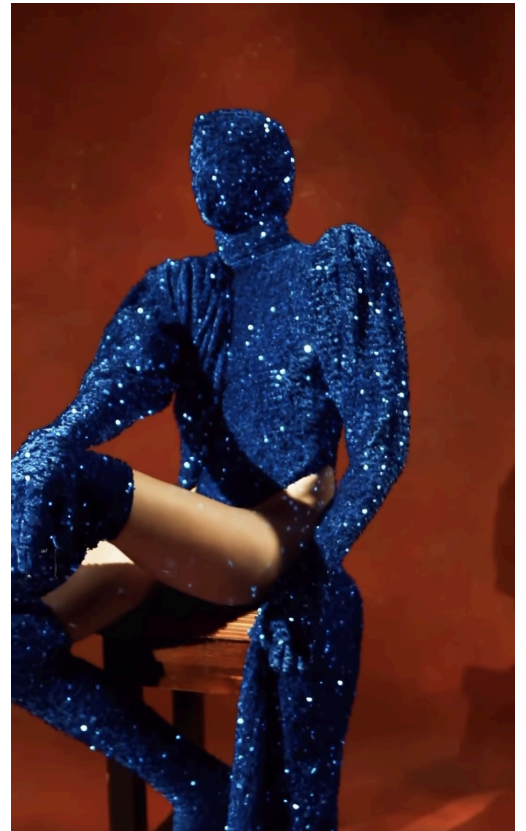


Ocean Blues
10x17 foot / 3x5 meters
Oil on canvas
£200 per day





Vivid Reds
10x17 foot / 3x5 meters
Oil on canvas
£200 per day





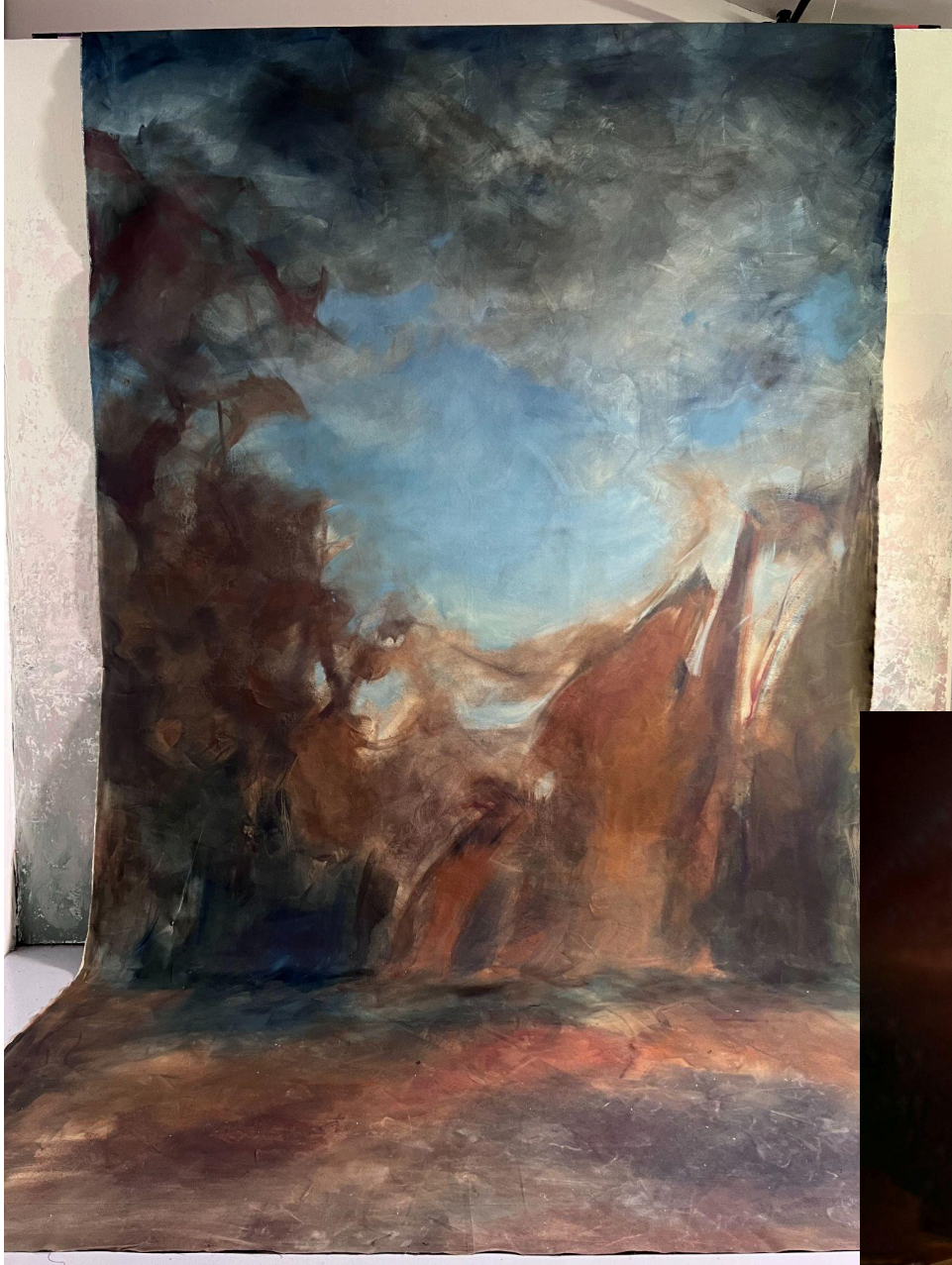
Orange
10x17 foot / 3x5 meters
Acrylic on canvas
£150 per day
(this canvas is now worn with
some cracks in the paint)





Vintage Ship
10x17 foot / 3x5meters
Oil on canvas
£250 per day





Autumnal
10x17 foot / 3x5meters
Oil on canvas
£250 per day



AVAILABLE PROPS

Please enquire for hire prices

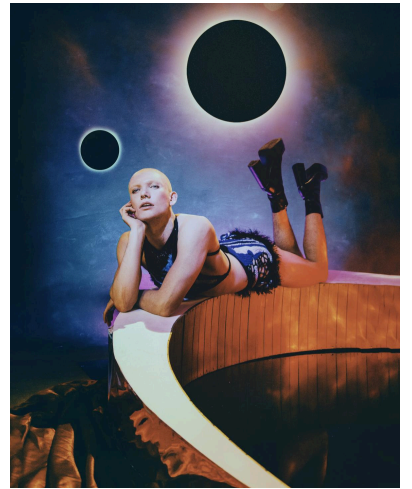


Crescent Moon

240cm diameter

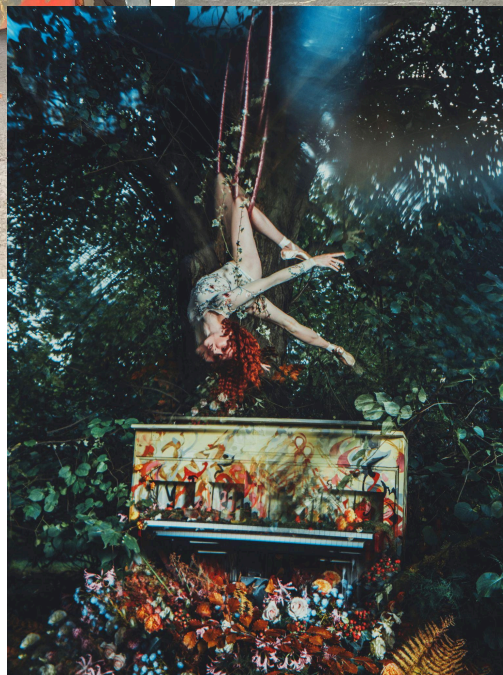
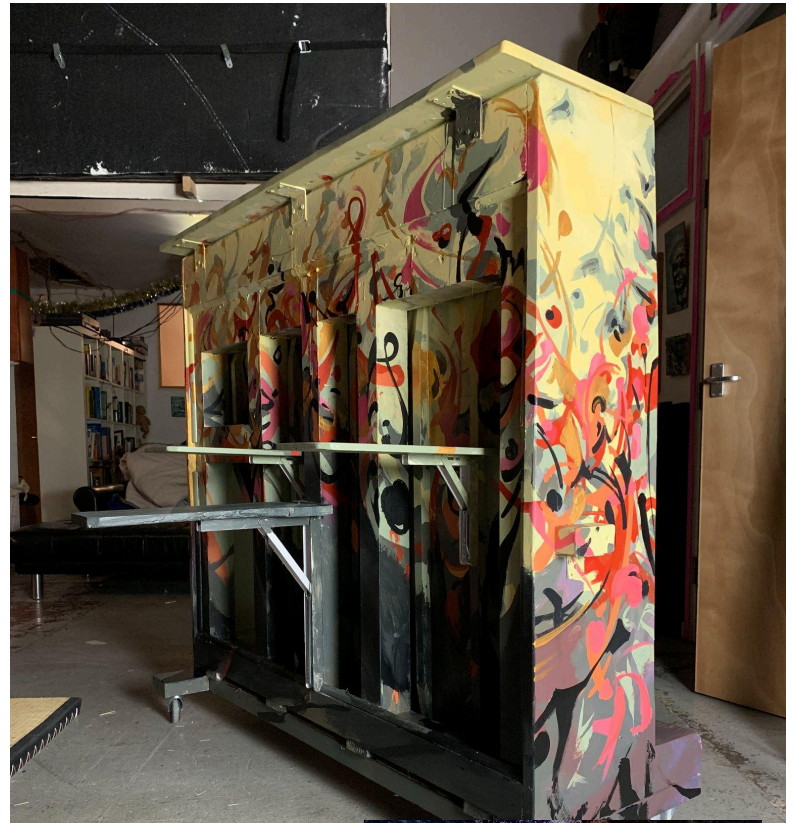
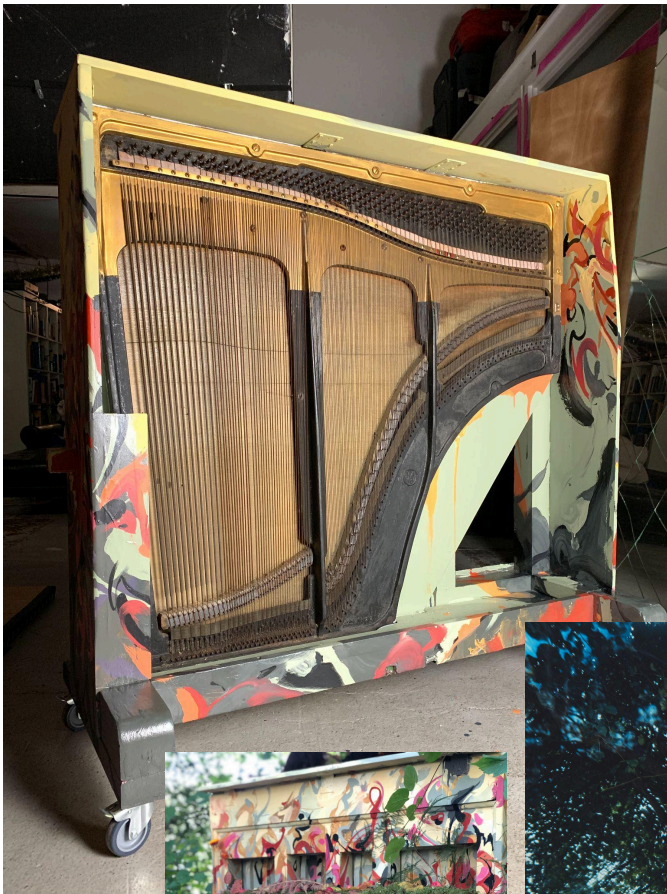
40cm width

Timber



Upcycled Piano

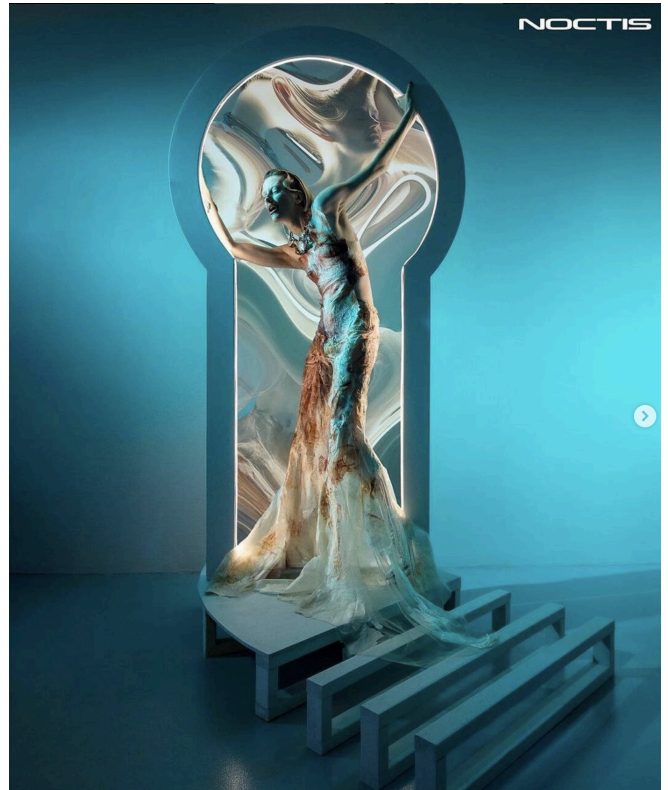
Platform for standing / performing on top
135cm height
135cm width
35cm depth (of top platform)
60cm depth (of legs with braker wheels)



Keyhole Door

225cm height

120cm width (widest part)



Matthew Lawrence is a contemporary artist based in London, available for hire as a set designer , mural / set painter & prop maker. Please enquire for more details and availability.

“Whether its a commercial enterprise campaign or a creative passion project, Matthew will help visualise and bring your ideas to life, from detailed planning and communication to the execution of the build, his wide range of expertise and experience in the industry of creative production will lead you to your goals through an endeavour of artistry.”

info@mgjlawrence.com

www.mgjlawrence.com

www.dccstudioslondon.com/studios